



## 5 Lowndes Buildings

Castle Street, Farnham, GU9 7JD

A beautifully presented and updated Grade II listed town centre cottage in a prime town centre location tucked away off Castle Street.

**Price Guide £365,000**

# 5 Lowndes Buildings

Castle Street, Farnham, GU9 7JD



- Charming Grade II listed town centre cottage
- Sitting room with fireplace
- Shower room
- Close to all the town's amenities
- Situated off Castle Street in the heart of Farnham Town
- Fitted kitchen
- Front garden
- Beautifully updated
- Double bedroom with wardrobe
- Rear storage shed



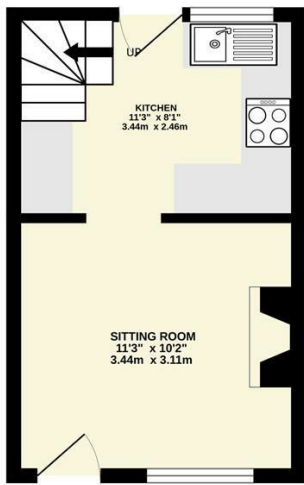
[Directions](#)



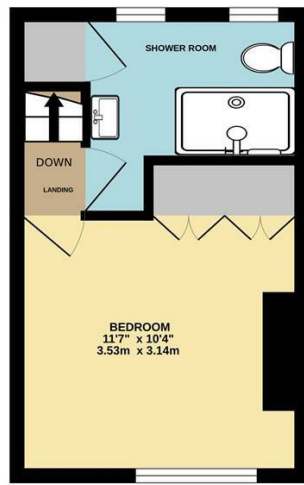


# Floor Plan

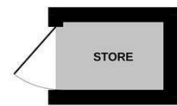
GROUND FLOOR  
199 sq.ft. (18.5 sq.m.) approx.



1ST FLOOR  
200 sq.ft. (18.6 sq.m.) approx.



OUTBUILDING  
15 sq.ft. (1.4 sq.m.) approx.



TOTAL FLOOR AREA: 414 sq.ft. (38.5 sq.m.) approx.

Whilst every attempt has been made to ensure the accuracy of the floorplan contained here, measurements of doors, windows, rooms and any other items are approximate and no responsibility is taken for any error, omission or mis-statement. This plan is for illustrative purposes only and should be used as such by any prospective purchaser. The services, systems and appliances shown have not been tested and no guarantee as to their operability or efficiency can be given.  
Made with Metropix ©2025

These particulars, whilst believed to be accurate are set out as a general outline only for guidance and do not constitute any part of an offer or contract. Intending purchasers should not rely on them as statements of representation of fact, but must satisfy themselves by inspection or otherwise as to their accuracy. No person in this firm's employment has the authority to make or give any representation or warranty in respect of the property.

